



OECD REGULATORY POLICY OUTLOOK 2018



Daniel Trnka and Rebecca Schultz, Regulatory Policy, OECD
NRR Better Regulation Seminar
27 March 2019, Stockholm



OECD and Regulatory Policy

25 years of experience in dealing with regulatory policy/better regulation

OECD has **reviewed** regulatory policy in most of its member countries + Brazil, China, Russia, Indonesia

Internationally recognised Principles: *Recommendation on Regulatory Policy and Governance*





Unpacking regulatory policy

Strategic Approach	Institutions	Management Tools	Governance
Policy Statement	Oversight Body	Impact Assessment	Whole of Government
Political Leadership	Parliaments	Stakeholder engagement	National/Sub-national interface
Designated Minister	Regulators in ministries/agencies	Ex post Evaluation	International regulatory co-operation
	Inspectors	Enforcement and inspections	
	International organisations	...	

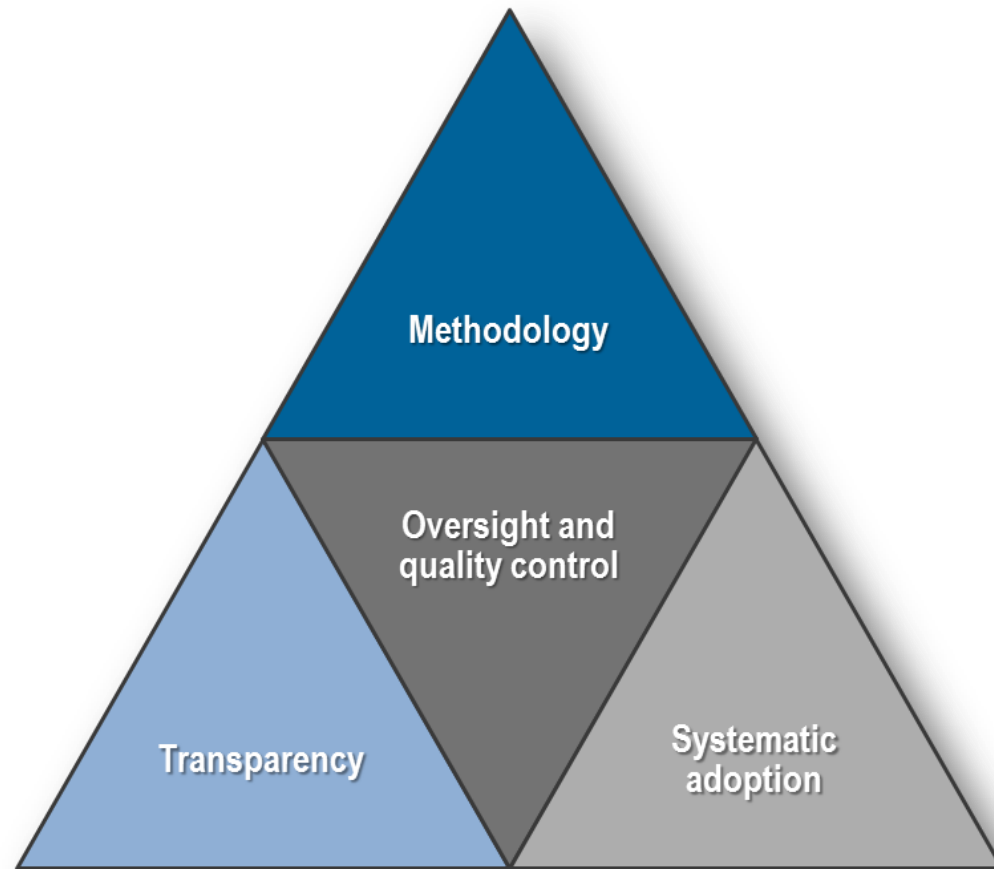


Indicators of Regulatory Policy and Governance (iREG) – Methodology

Stakeholder engagement

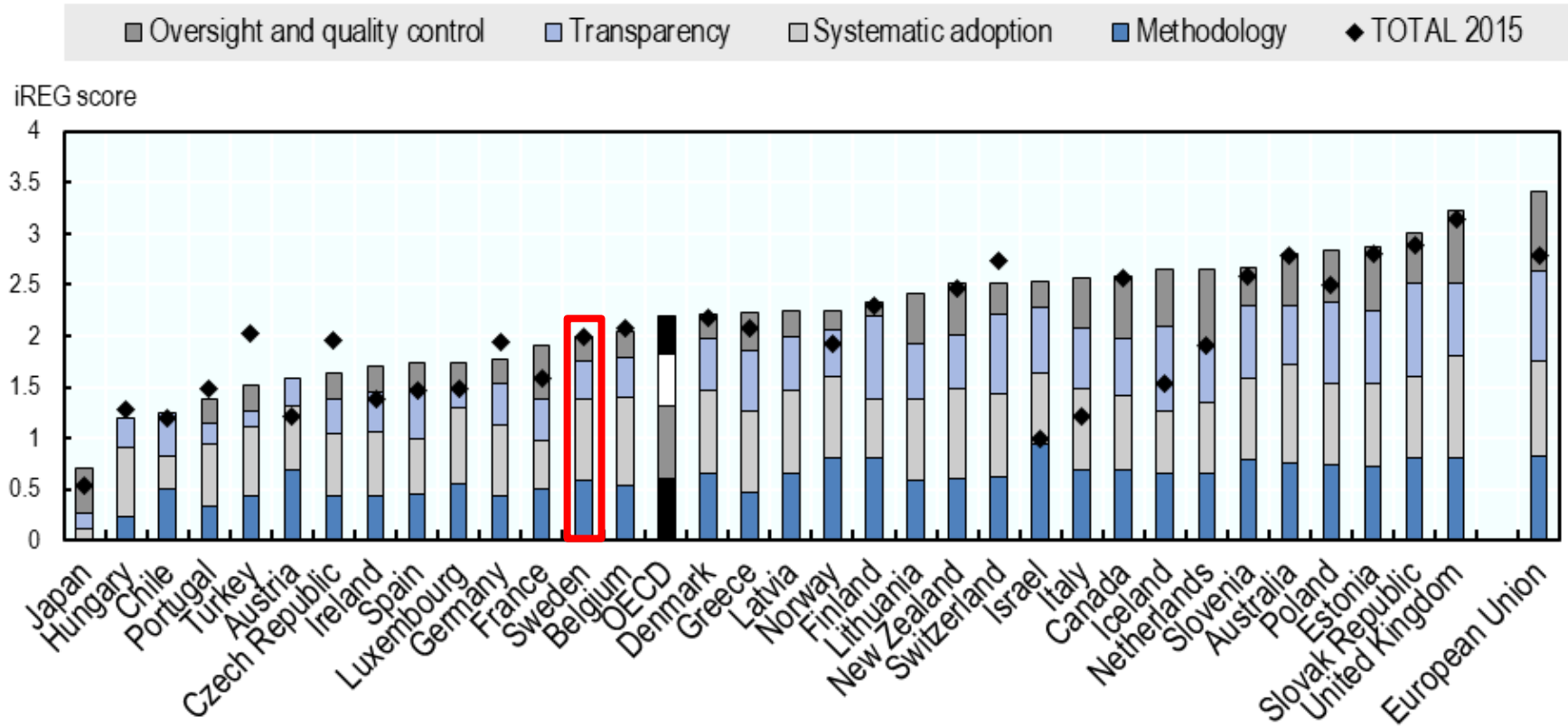
Regulatory Impact Assessment (RIA)

Ex post evaluation





Composite indicators: Stakeholder engagement in developing primary laws, 2018

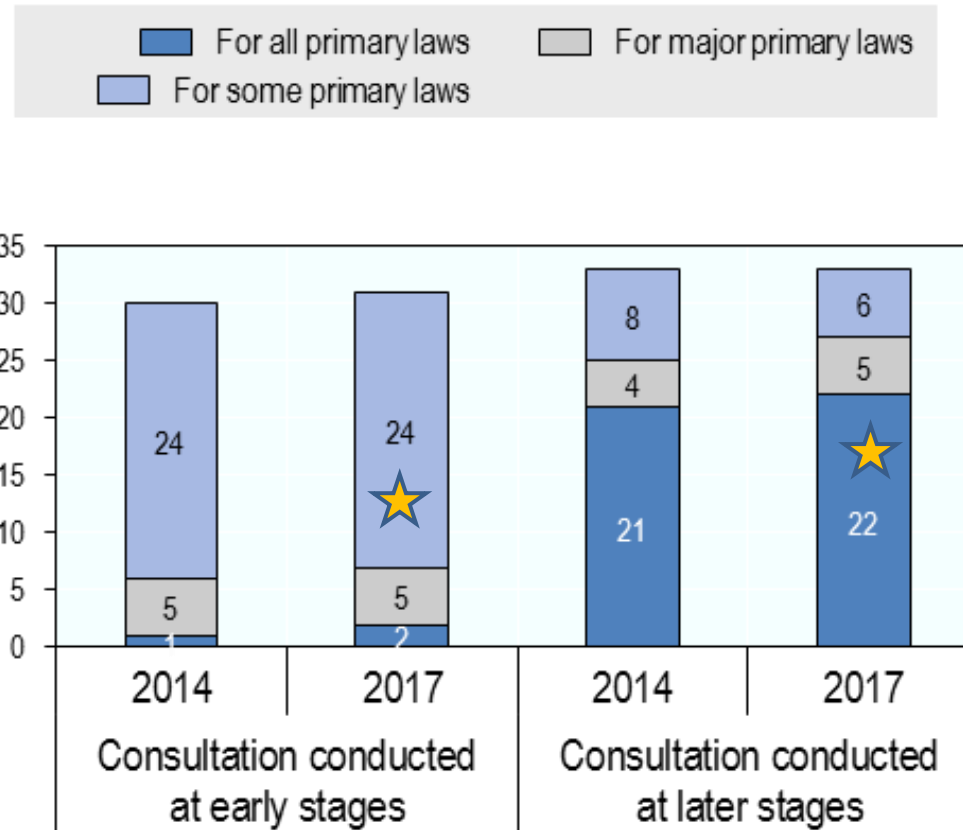


Notes: Data for OECD countries is based on the 34 countries that were OECD members in 2014 and the European Union. Data on the new OECD member and accession countries Colombia, Costa Rica, Latvia and Lithuania is only available for 2017. The more regulatory practices as advocated in the 2012 Recommendation a country has implemented, the higher its iREG score. The indicator only covers practices in the executive. This figure therefore excludes the United States where all primary laws are initiated by Congress, as well as Colombia, Costa Rica, Korea and Mexico, where a majority of primary laws are initiated by the legislature.

Source: Indicators of Regulatory Policy and Governance Surveys 2014 and 2017, <http://oe.cd/ireg>.



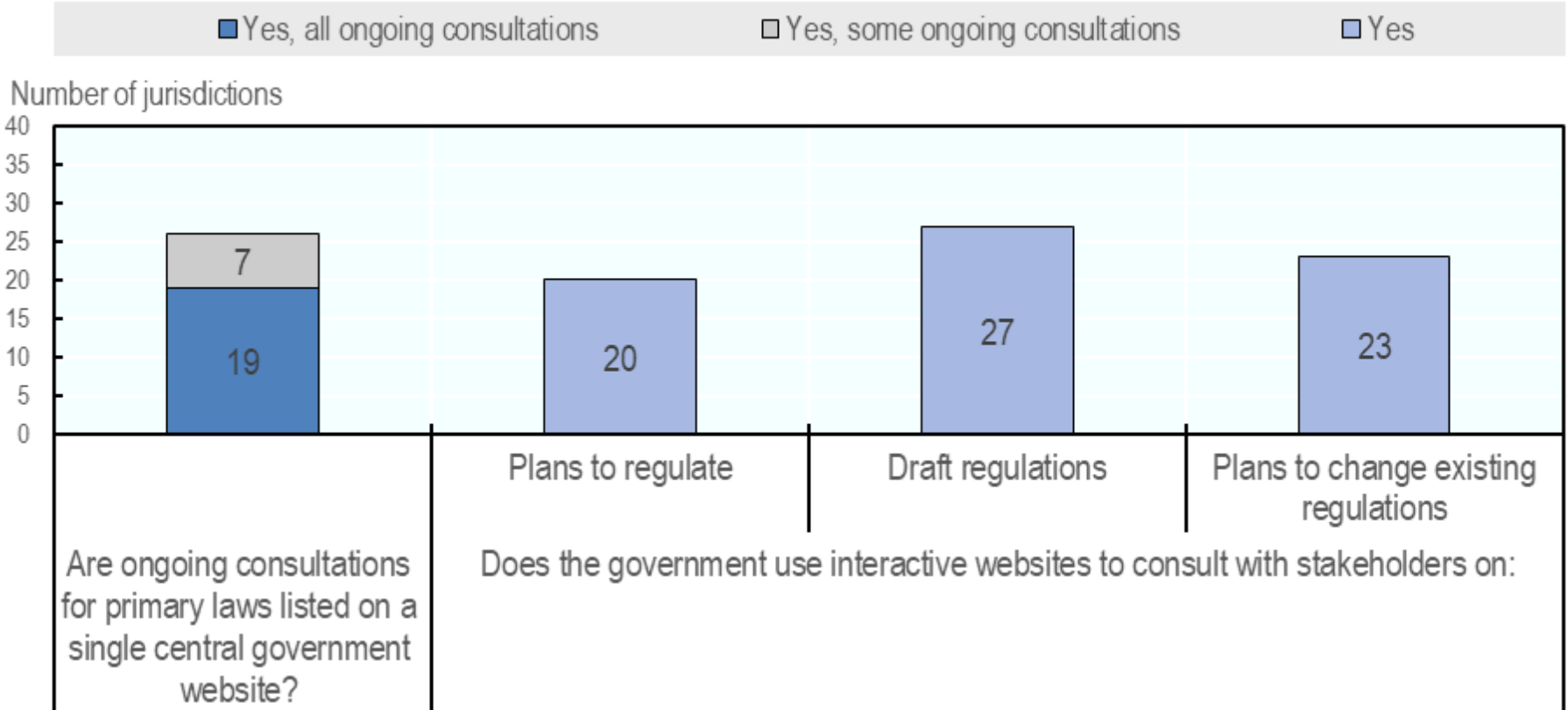
Consultations generally happen at a late stage in the rulemaking process



Note: Data is based on 34 OECD member countries and the European Union.
Source: 2018 OECD Regulatory Policy Outlook.



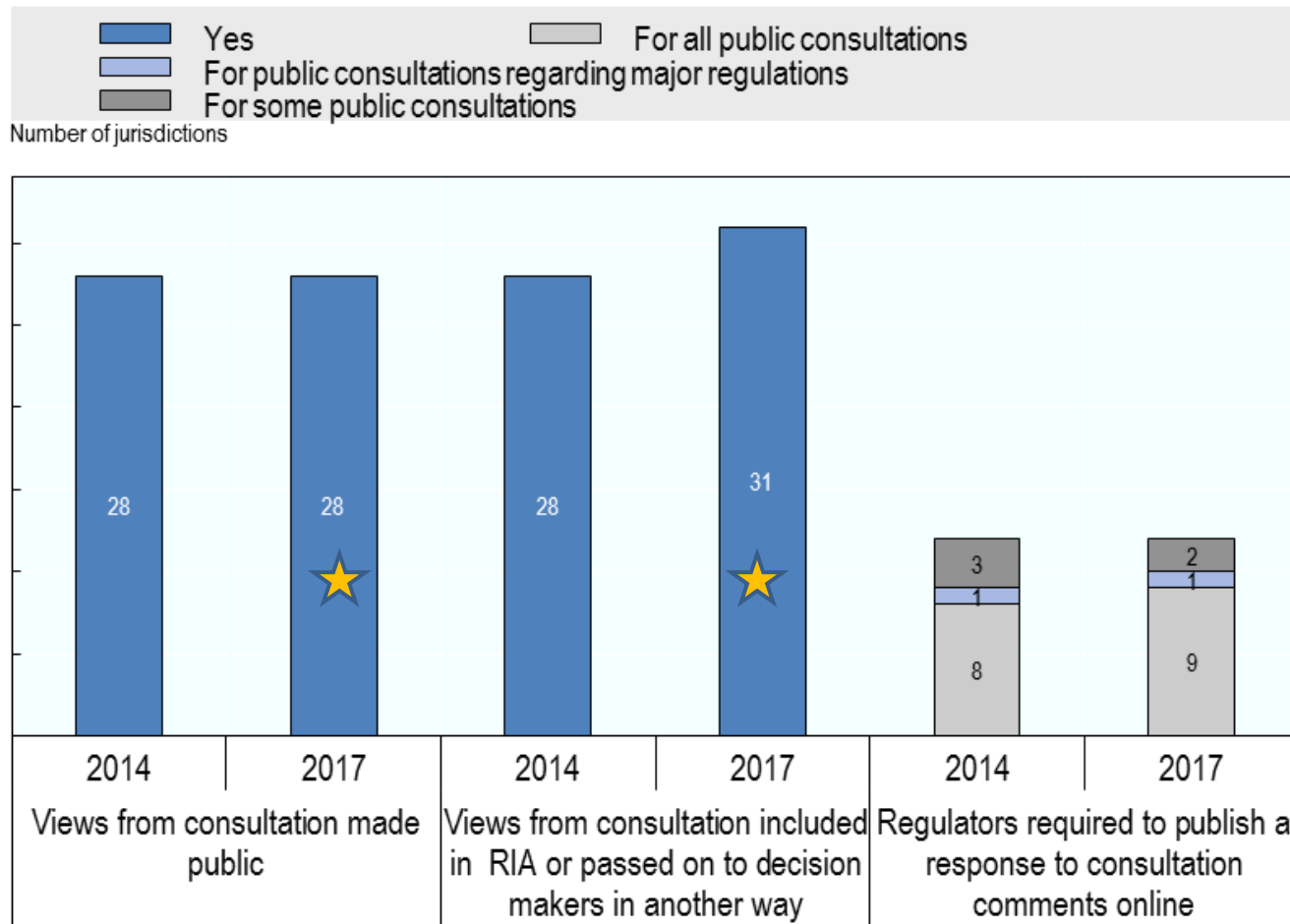
Many countries use central consultation portals and interactive websites.



Note: Data is based on 38 OECD member and accession countries and the European Union.
Source: 2018 OECD Regulatory Policy Outlook.



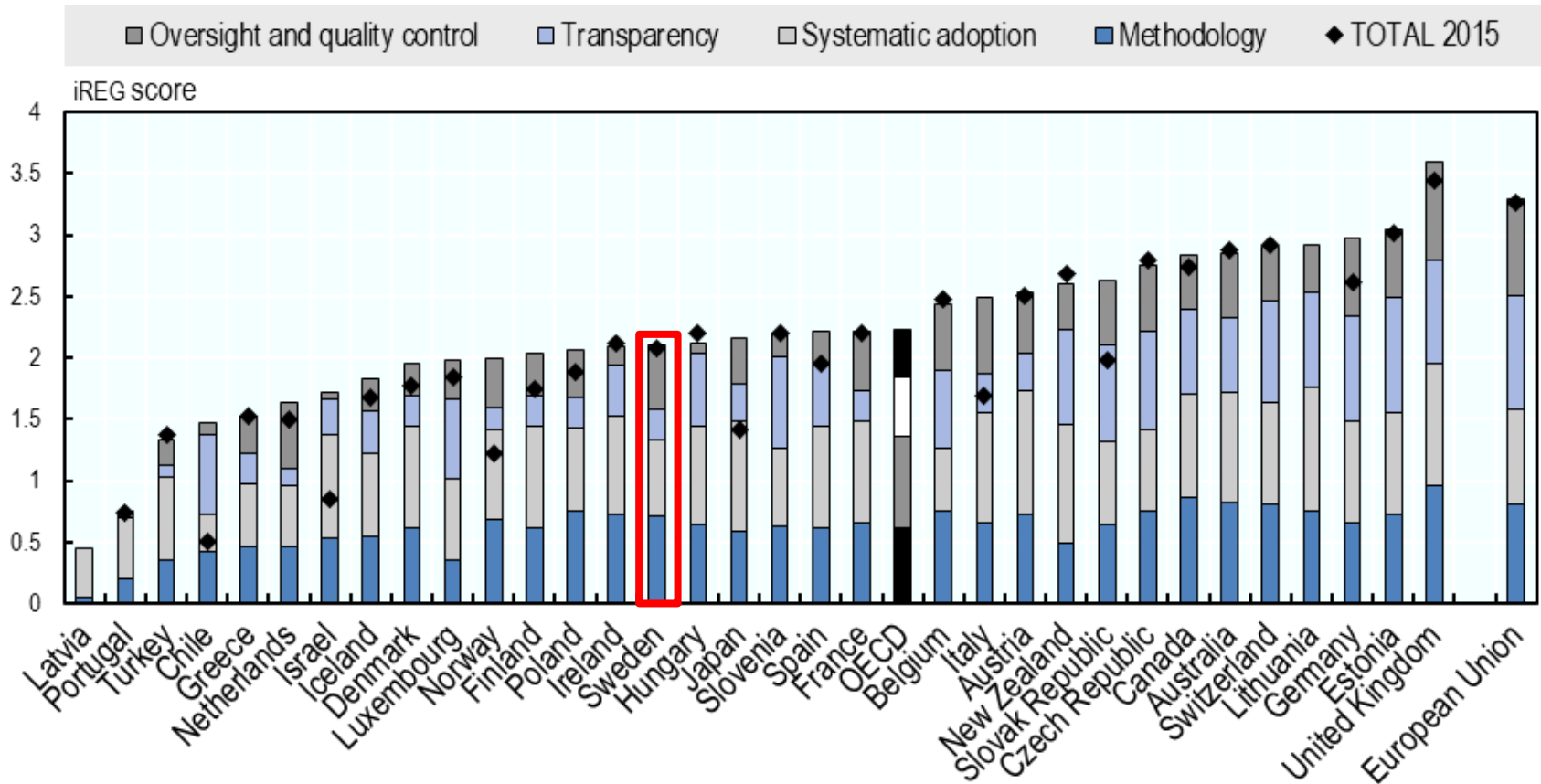
Publishing responses to stakeholder input helps increase transparency of process



Note: Data is based on 34 OECD member countries and the European Union.
Source: 2018 OECD Regulatory Policy Outlook.



Composite indicators: RIA for developing primary laws, 2018

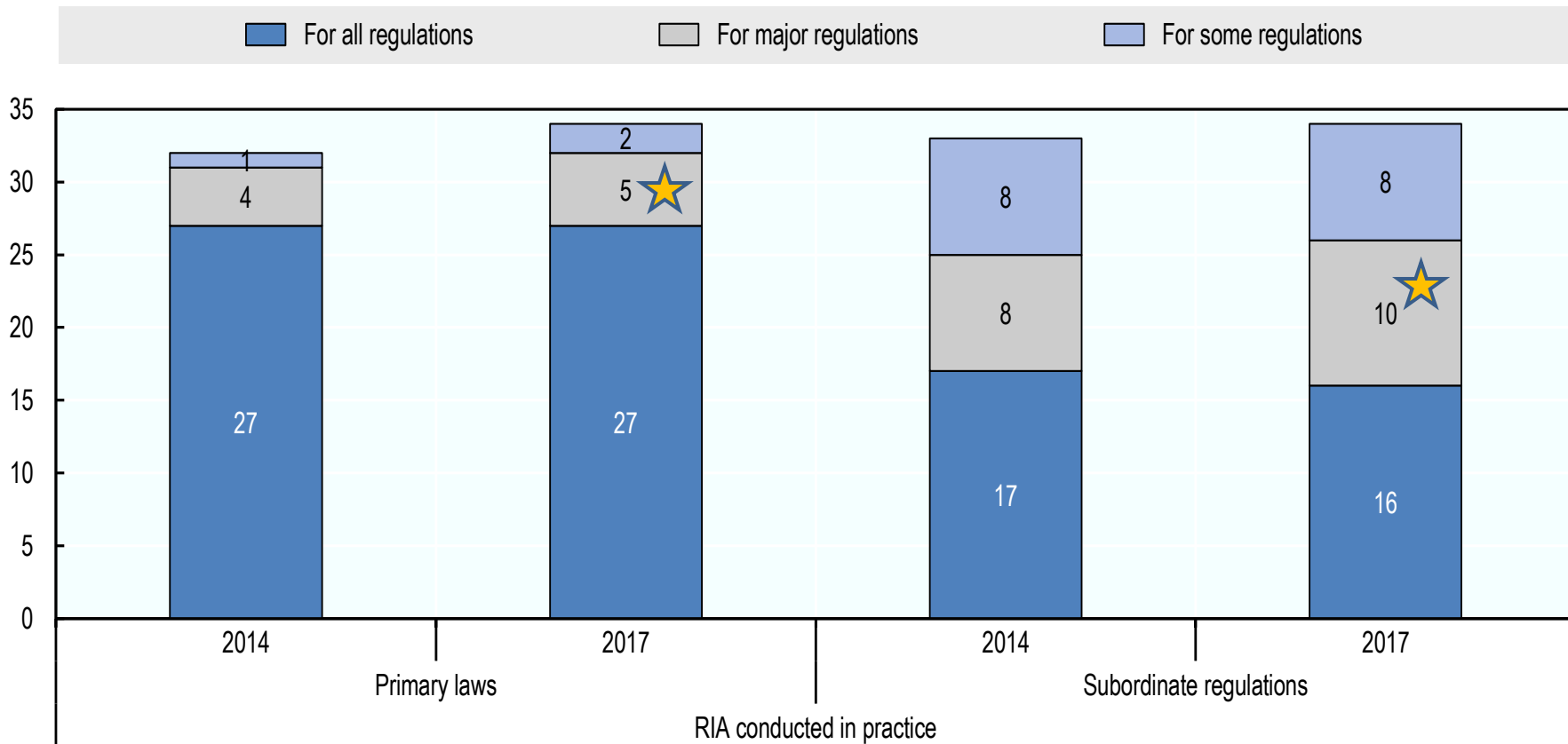


Notes: Data for OECD countries is based on the 34 countries that were OECD members in 2014 and the European Union. Data on the new OECD member and accession countries Colombia, Costa Rica, Latvia and Lithuania is only available for 2017. The more regulatory practices as advocated in the 2012 Recommendation a country has implemented, the higher its iREG score. The indicator only covers practices in the executive. This figure therefore excludes the United States where all primary laws are initiated by Congress, as well as Colombia, Costa Rica, Korea and Mexico, where a majority of primary laws are initiated by the legislature.

Source: Indicators of Regulatory Policy and Governance Surveys 2014 and 2017, <http://oe.cd/ireg>.



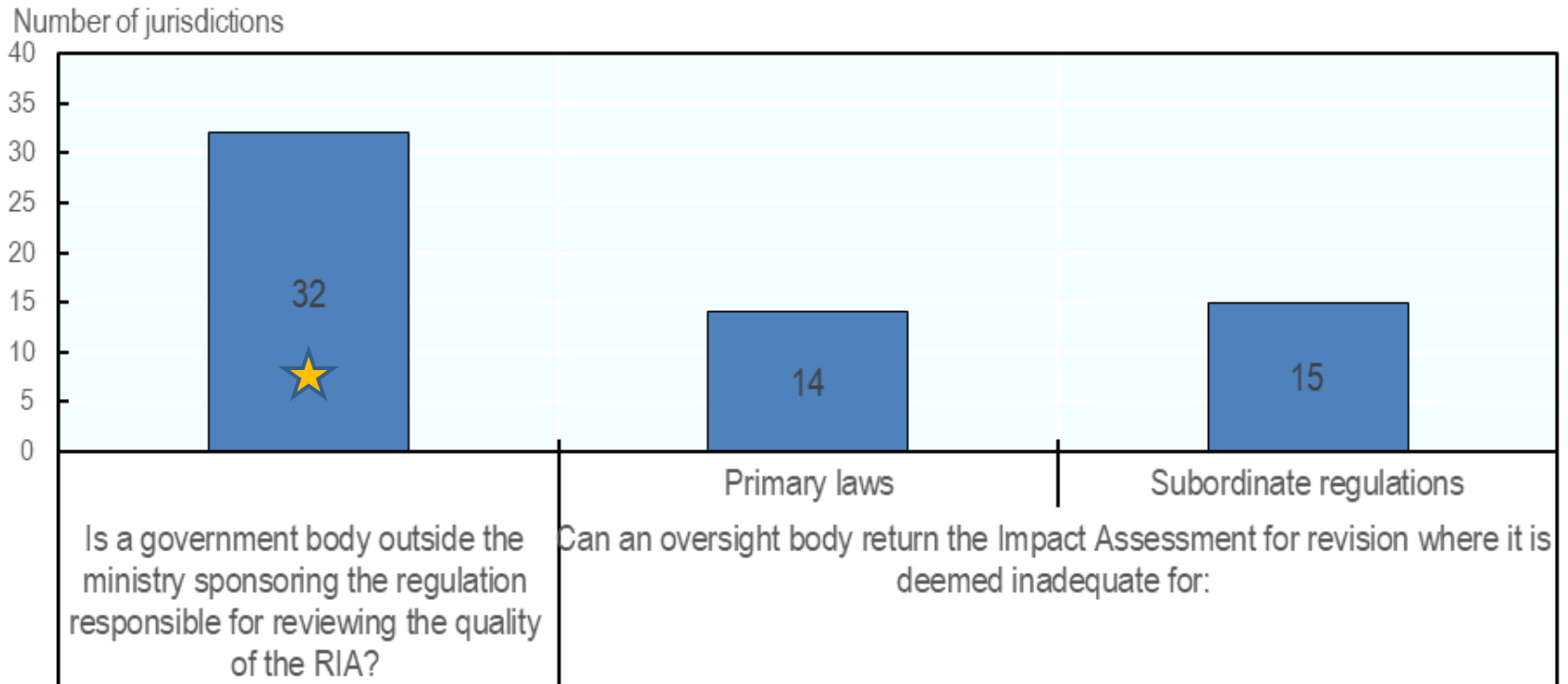
RIA in practice – convergence with requirements & more proportionate



Note: Data is based on 34 OECD member countries and the European Union.
Source: 2018 OECD Regulatory Policy Outlook.



Few oversight bodies can ask ministries to revise their RIAs if the quality is insufficient.

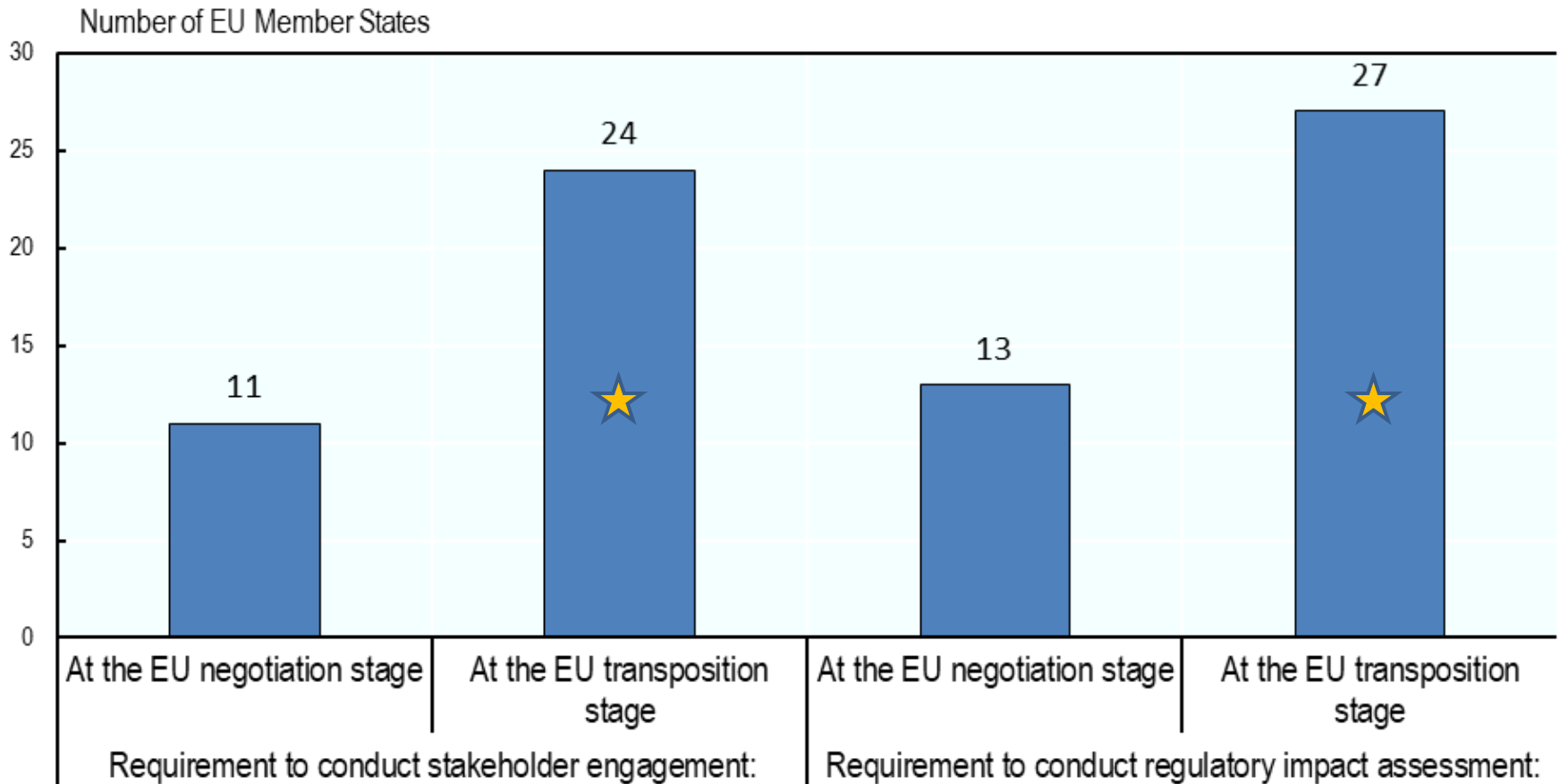


Note: Data is based on 38 OECD member and accession countries and the European Union.

Source: 2018 OECD Regulatory Policy Outlook.



Most EU Member States do not use better regulation tools before EU regulations are adopted

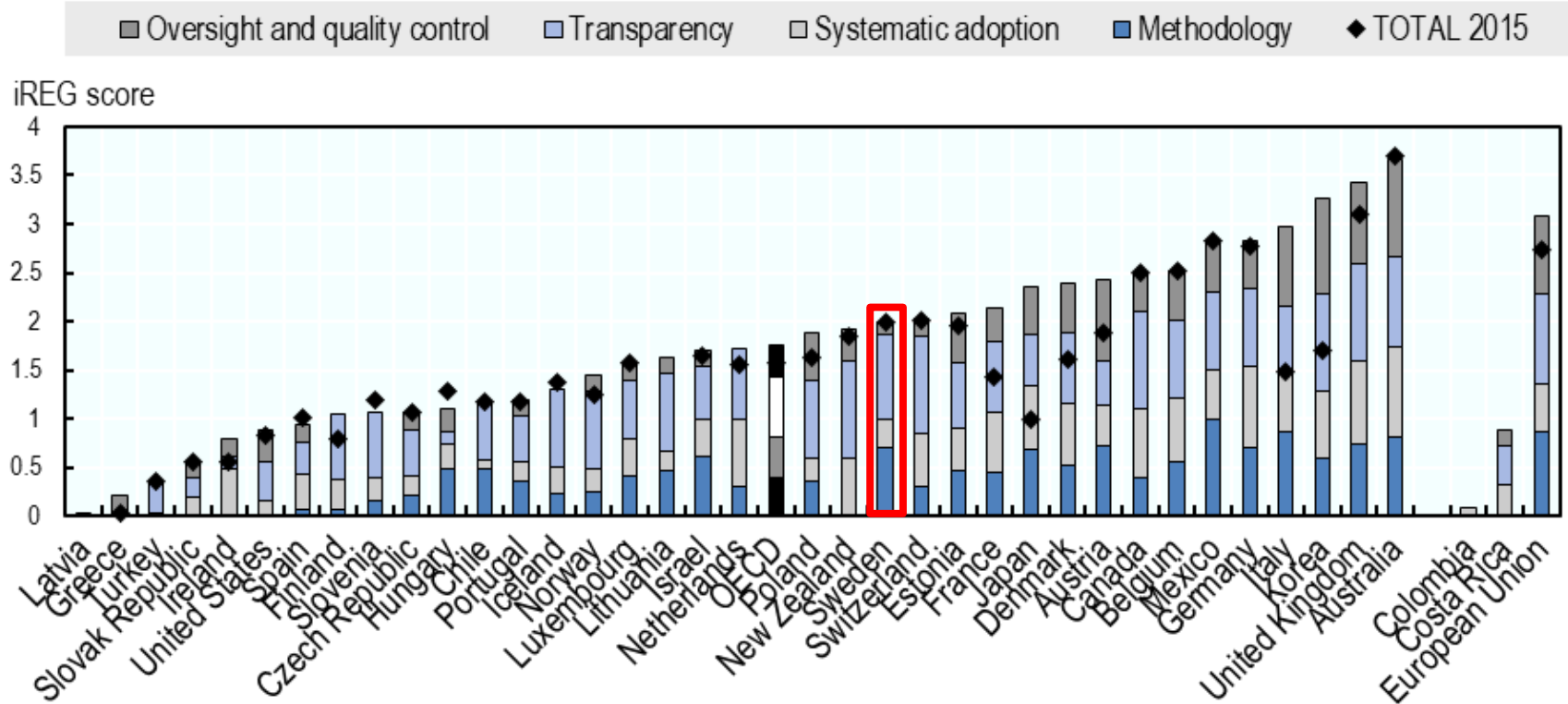


Note: Data is based on 28 EU Member States.

Source: OECD (2019): Better Regulation Practices across the European Union, OECD Publishing, Paris.



Composite indicators: Ex post evaluation for primary laws, 2018

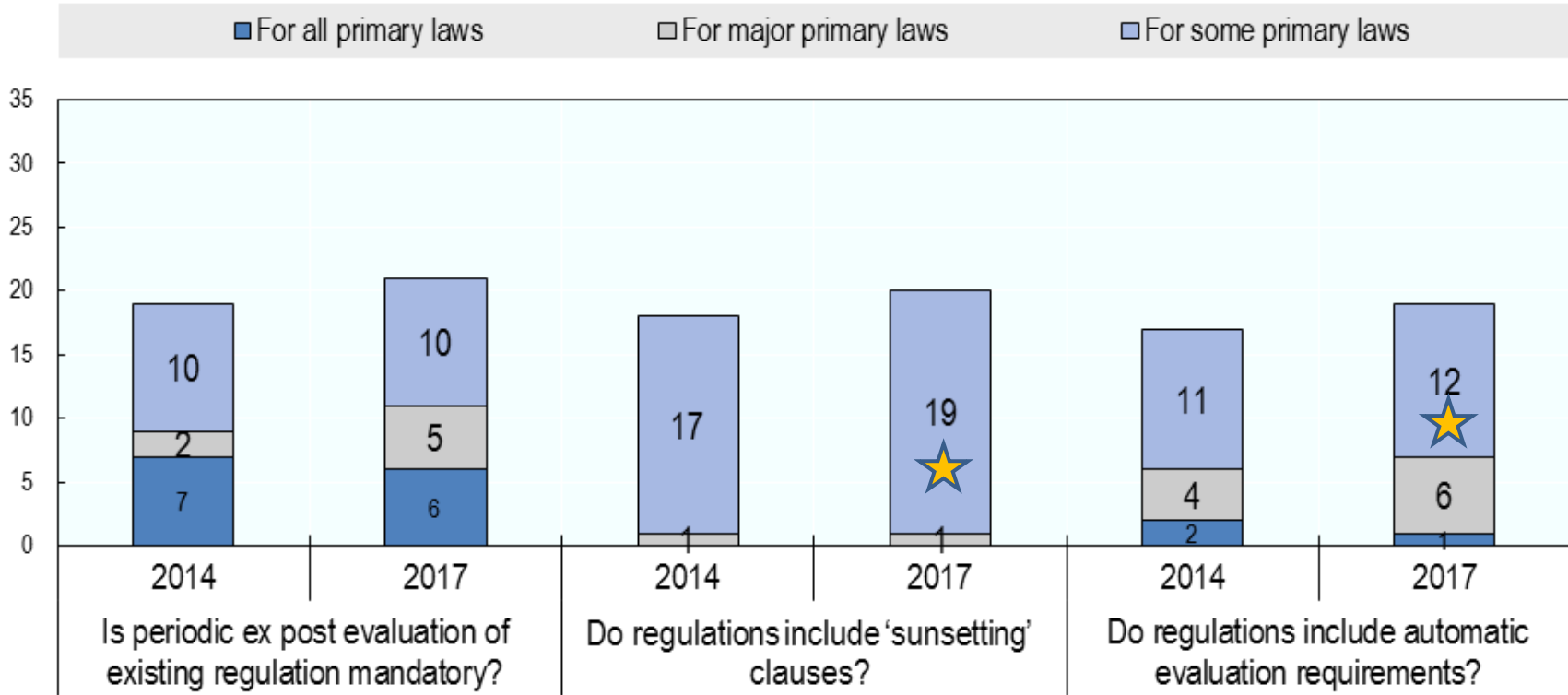


Notes: Data for OECD countries is based on the 34 countries that were OECD members in 2014 and the European Union. Data on the new OECD member and accession countries Colombia, Costa Rica, Latvia and Lithuania is only available for 2017. The more regulatory practices as advocated in the 2012 Recommendation a country has implemented, the higher its iREG score.

Source: Indicators of Regulatory Policy and Governance Surveys 2014 and 2017, <http://oe.cd/ireg>



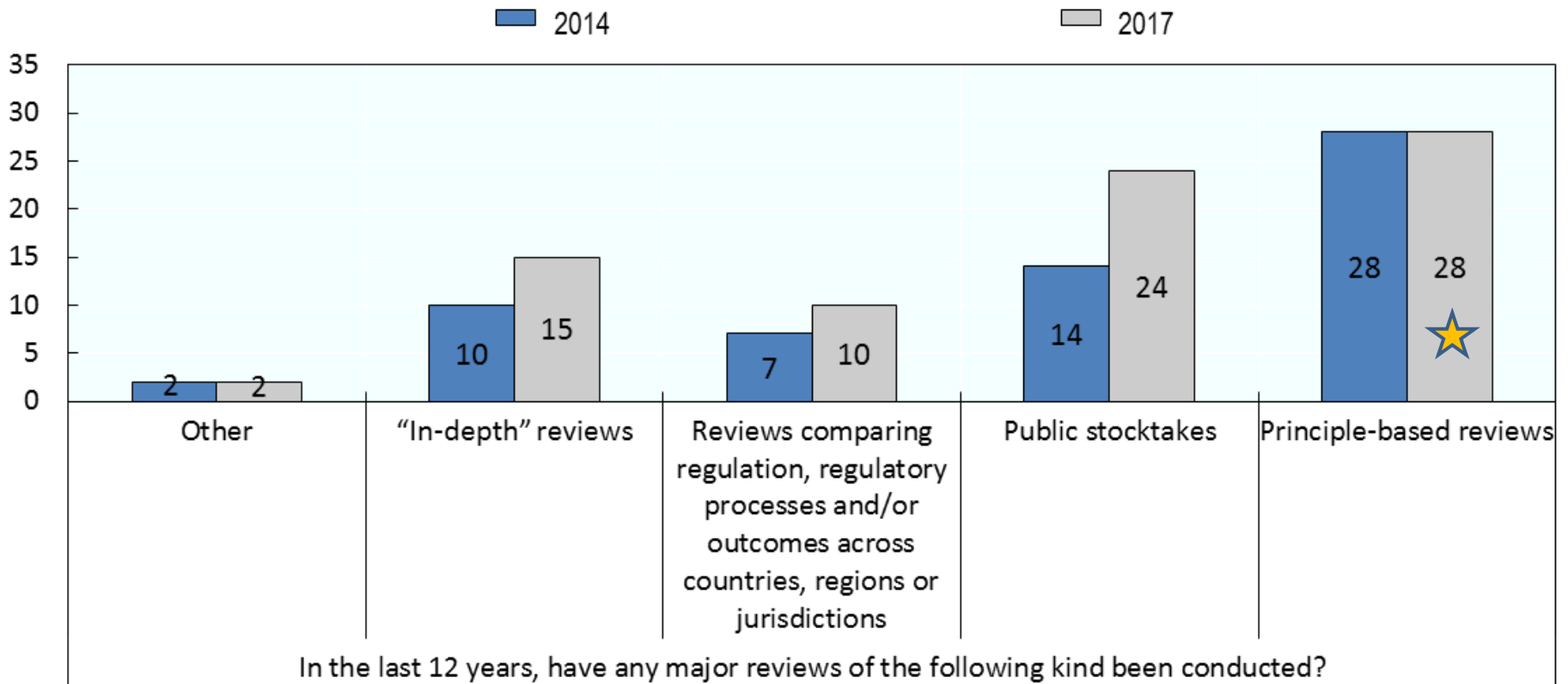
Ex post evaluation of regulations remains sporadic in many jurisdictions



Note: Data is based on 34 OECD member countries and the European Union.
Source: Indicators of Regulatory Policy and Governance 2018, <http://oe.cd/ireg>.



Ad hoc reviews are principle-based and focused on administrative burdens



Note: Data is based on 34 OECD member countries and the European Union.

Source: 2018 OECD Regulatory Policy Outlook.



Thank you and visit www.oecd.org/gov/regulatory-policy/

Recommendation of the OECD Council on Regulatory Policy and Governance



The Recommendation is the first international instrument to address regulatory policy, management and governance as a whole-of-government activity that can be addressed by sectoral ministries, regulatory and competition agencies.

The Recommendation sets out the measures that Governments can and should take to support the implementation and advancement of systemic regulatory reform to deliver regulations that meet public policy objectives and will have a positive impact on the economy and society.

[Read the Recommendation of the Council on Regulatory Policy and Governance.](#)

International regulatory co-operation



Promote the co-ordination of rules and their enforcement

Network of Economic Regulators



Share experiences and good practices in economic regulation

Measuring regulatory performance



Assessing the benefits of regulatory reform for citizens and business

Administrative simplification



Review the stock of regulations to reduce unnecessary burdens

Regulatory Impact Analysis



Integrate RIAs in the development of new regulations

Risk and regulatory policy



Effectively assess and manage risks